

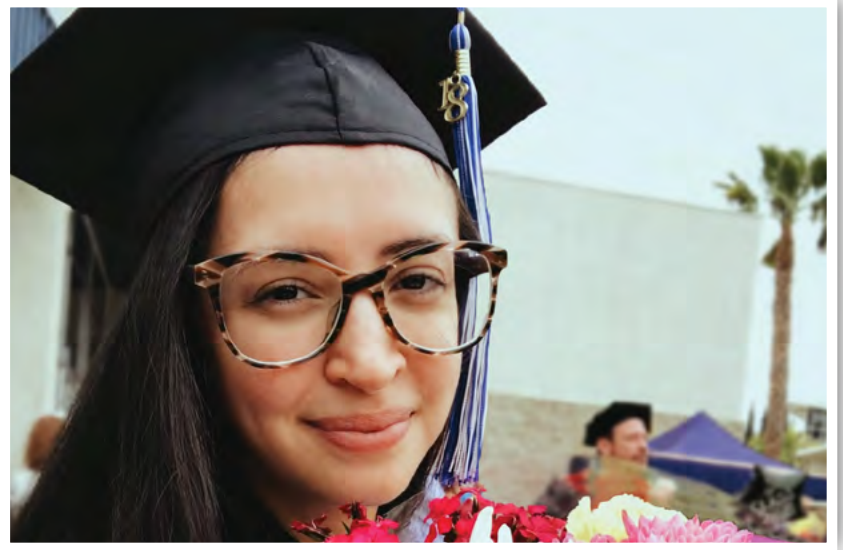


## MISSION STATEMENT

*Wilson University empowers students to become world-class leaders through spiritual formation and Christian higher education in an environment that embodies the Pentecostal ethos.*

## HIGHLIGHTS OF A WILSON DEGREE PROGRAM

- Affordable tuition with payment options
- 100% online courses that can be taken from anywhere in the world
- Transformational programs that challenge you academically, intellectually, and personally
- Personal attention from professors with real-world experience within their respective fields
- Take classes one-at-a-time
- Convenient and flexible so you can balance your personal and professional commitments
- Transfer previously earned college credit
- Interact with fellow students in a highly engaging course platform
- Unique blend of readings, lectures, assignments, and discussion boards
- Enhance your biblical knowledge and Christian worldview
- Apply what you learn in “real-time” in your local church



## PROVEN LEADERSHIP IN THE PENTECOSTAL MOVEMENT

### Reputation for Excellence

- Gleam from accomplished, world-class leaders of the apostolic movement.
- Engage in a lifelong pursuit of knowledge, character formation, and service to your local church and global communities.

### Distinctly Apostolic

- Wilson University upholds and preserves teachings and principles of the New Testament church in dynamics, polity, and practice.
- Spiritual and intellectual formation form the basis for individual wholeness and soundness.

### Future Admission

This degree is recognized for admission into the MA in Leadership with Wilson University at William Jessup University.



# BACHELOR OF SCIENCE IN CHRISTIAN MINISTRY

## Program Overview

*This program helps men and women increase their understanding of Scripture, develop practical skills for various church leadership roles, prepare for professional Christian ministry, and/or pursue graduate studies in the field. Degree-seeking students progress through the 120-unit curriculum by completing 49 units of general education, 23 units of general electives, and 48 units in the Christian ministry major.*

### PROGRAM REQUIREMENTS

Strategies for Success ..... 3

### GENERAL EDUCATION

Communication & Critical Thinking  
Intro to Oral Communication ..... 3  
English Reading and Composition ..... 3  
Introduction to Literature ..... 3  
Introduction to Critical Thinking ..... 3

**TOTAL..... 12**

### BIBLICAL STUDIES

History & Literature of Early Christians ..... 3  
History & Literature of Ancient Israel ..... 3

**TOTAL..... 6**

### HUMANITIES

Theological Foundations ..... 3  
Christian Worldview & Contemporary Living ..... 3  
Humanities Elective ..... 3

**TOTAL..... 9**

### HISTORY & SOCIAL-BEHAVIORAL SCIENCE

Ancient World History ..... 3  
U.S. Government ..... 3  
History/Social Science Elective ..... 3  
History/Social Science Elective ..... 3

**TOTAL..... 12**

### SCIENCE & MATH

Biological Science ..... 3  
Biological Science Lab ..... 1  
Liberal Arts Mathematics ..... 3

**TOTAL..... 7**

### GENERAL ELECTIVES

Pentecostalism..... 3

Select from a widespread list of courses to fulfill the other 20 elective units. Electives must be outside of your major.

**TOTAL..... 23**

### CHRISTIAN MINISTRY MAJOR

Spiritual Formation ..... 3  
Field Practicum 1..... 1  
Systematic Theology ..... 3  
Apostolic Theology ..... 3  
Theology of Ministry ..... 3  
Literary Exegesis and Analysis ..... 3  
Prophets..... 3  
Matthew..... 3  
John's Literature and Theology ..... 3  
Paul's Literature and Theology..... 3  
Early Church Models of Ministry ..... 3  
Strategic Leadership ..... 3  
Practical Ministry..... 3  
The Church in Context ..... 3  
Homiletics ..... 3  
Ministry in Context (capstone)..... 3  
Field Practicum 2..... 2  
TOTAL Major ..... 48

Grand Summary	
General Education & Strategies	49
General Electives	23
Christian Ministry Major	48
<b>Total Units to Graduate</b>	<b>120</b>